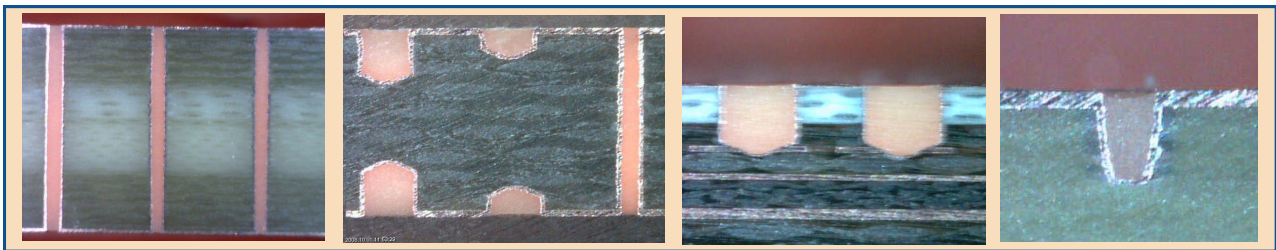


THP 35 Double Chamber Plugging Machine

Through—double side blind hole filling in one single step



Max. plugging ratio : 1:40

max. panel thickness 10mm (0.400")

smallest through hole size 0,1mm (0.004")



High vacuum hole filling process

THP 35

Double Chamber Plugging Machine

Patents:

DE 10 2007 053 513
 KR 10-1078 384
 US 8.191.498
 TW I 327 048

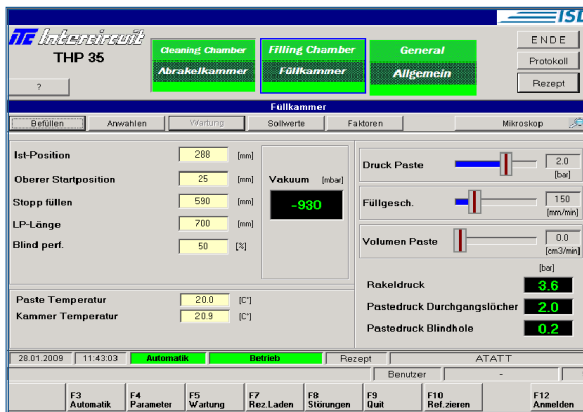


serving the world of PCB technology

The THP 35 Double Chamber Plugging machine is designed for PCB shops that need to fill blind & through holes in one step. A completely new patented type of vacuum filling heads were designed for this process. By using High Vacuum under pressure that is applied to the filling area of the heads instead of Low Vacuum under pressure applied to an entire chamber, we achieve the best filling results in the market.

No paste outgassing during the high vacuum filling process

Vacuum up to – 940 mbar remaining pressure only 60 mbar



PCB control panel with all relevant parameters

- An internal cooling and heating system prevents the paste from hardening during the storage time inside the machine. In production mode the heating system guarantees a constant paste viscosity for the best plugging results possible.
- Quick exchange system for different filling head sizes
- No direct air pressure on the paste cartridge piston

TECHNICAL DATA

Typ	Max. panel size	Panel thickness	Floor space L x W x H	
THP35	610mm x 762mm 24" x 30"	0,3mm — 10mm 0.012" to 0.400"	11'4" x 3'3" x 6'8"	3448mm x 982mm x 2085mm
THP35 XXL	762mm x 1016mm 30" x 40"		12'6" x 3'10" x 7'	3822mm x 1180mm x 2125mm
THP35 3XL	762mm x 1372mm 30" x 54"			

PASTE DELIVERY
COMPRESSED AIR:
ELECTRICITY:

STANDARD 360 CC CARTRIDGES
90 PSI — 6 BAR
AC 400 V 3 PHASE, N, PE 50Hz
AC 480V 3 PHASE, N, PE 60 Hz (USA)

World wide installations of Hole Plugging Machines



ITC Intercircuit GmbH - Wasserburger Landstrasse 280 81827 München Germany
 Phone (+49) 89 453604-0 Fax: (+49) 89 453604-20 www.itc-intercircuit.de

ITC Intercircuit N.A. - 21625 Grenada Avenue - Lakeville, Minnesota 55044
 Phone: 952-469-2310 Fax: 952-469-2007 www.itcintercircuit.com